

PALMETTO COLLECTION

PERIWINKLE

2 Bedrooms / 3 Baths / Den / Casita / Covered Lanai / Courtyard / 2-Car Garage



Elevation A

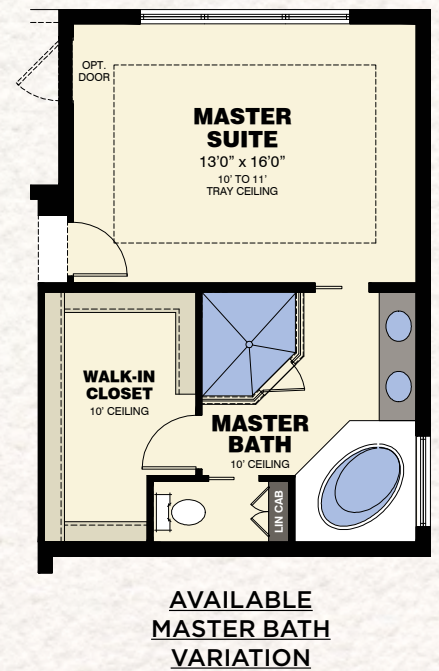
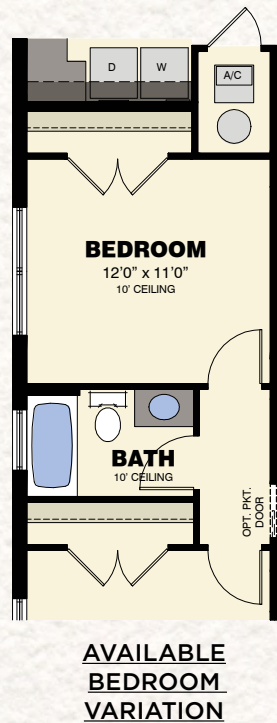
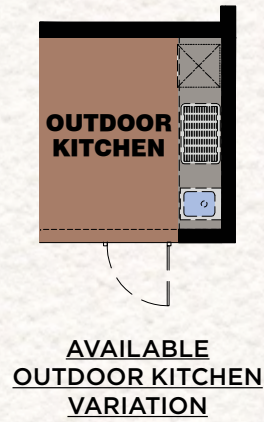


Elevation B



FLOOR PLAN

Main Living Area	2,129 S.F.
Casita	284 S.F.
<b>Total Living Area</b>	<b>2,413 S.F.</b>
2-Car Garage	490 S.F.
Entry	30 S.F.
Outdoor Living	181 S.F.
Lanai	188 S.F.
<b>Total</b>	<b>3,302 S.F.</b>
Courtyard	889 S.F.
Entry Courtyard	52 S.F.



*The Isles*  
OF COLLIER PRESERVE



© Minto Communities, LLC 2016. All rights reserved. Content may not be reproduced, copied, altered, distributed, stored or transferred in any form or by any means without express written permission. Artist's renderings, dimensions, specifications, prices and features are approximate and subject to change without notice. Minto, the Minto logo, The Isles of Collier Preserve and The Isles of Collier Preserve logo are trademarks of Minto Communities, LLC and/or its affiliates. CGC 1519880. 9/2016